

WISLINE PUBLIC SITES

Individual sites may not be available for every program. Please contact the site in your area well in advance of your program to verify room availability.

4000	Adams	Adams County Extension	608-339-4237
4007	Alma	Buffalo County Courthouse	608-685-6256
4038	Antigo	Langlade County Extension Office	715-627-6236
4050	Appleton	Outagamie County UWEX	920-832-5121
4001	Ashland	Ashland County Courthouse	715-682-7017
4069	Baldwin	St. Croix County Ag Center	715-684-3301
4055	Balsam Lake	Polk County Center Building	715-485-8600
4064	Baraboo	Sauk County UWEX	608-355-3250
4003	Barron	Barron County Off Complex	715-537-6250
4031	Black River Falls	Jackson County Extension Office	715-284-4257
4009	Chilton	Calumet County Courthouse	920-849-1450
4010	Chippewa Falls	Chippewa County Courthouse	715-726-7950
4025	Crandon	Forest County Courthouse	715-478-2212
4037	Darlington	LaFayette County Ag Center	608-776-4820
4029	Dodgeville	Iowa County UWEX	608-935-0391
4052	Durand	Pepin County Government Center	715-672-5214
4073	Eagle River	Vilas County Courthouse	715-479-3648
4022	Eau Claire	Eau Claire County UWEX	715-839-4712
4075	Elkhorn	Walworth County UWEX	262-741-3186
4053	Ellsworth	Pierce County Office Building	715-273-3531 x6663
4023	Florence	Florence Resource Center	715-528-4480
4024	Fond du Lac	UWEX-Fond du Lac	920-929-3170
4005	Green Bay	Brown County Ag. & Extension Center	920-391-4610
4028	Green Lake	Green Lake County Courthouse	414-294-4032
4065	Hayward	Sawyer County Courthouse	715-634-4839
4030	Hurley	Iron County Courthouse	715-561-2695
4061	Janesville	Rock County Courthouse	608-757-5695
4032	Jefferson	Jefferson County UWEX	920-674-7296
4017	Juneau	Dodge County Admin. Building	920-386-3790
4044	Keshena	Menominee County Courthouse	715-799-4654
4035	Kewaunee	Kewaunee County Courthouse	920-388-4410
4036	La Crosse	La Crosse County UWEX	608-785-9593
4062	Ladysmith	Rusk County Courthouse	715-532-2151
4026	Lancaster	Grant County UWEX	608-723-2125
4015	Madison	The Pyle Center	608-262-1598
4040	Manitowoc	Manitowoc County UWEX	920-683-4169
4042	Marinette	Marinette County Courthouse	715-732-7510

4033	Mauston	Juneau County UWEX	608-847-9329
4070	Medford	Taylor County USDA Service Center	715-748-3327
4020	Menominee	Dunn County Ag Center	715-232-1636
4021	Menomonie	UW-Stout	715-232-5239
4039	Merrill	Lincoln County UWEX	715-536-0304
4027	Monroe	Green County UWEX	608-328-9440
4043	Montello	Marquette County Services Center	608-297-9153, ext. 3
4011	Neilsville	Clark County Courthouse	715-743-5121
4048	Oconto	Oconto County Courthouse	920-834-6845
4083	Oshkosh	Winnebago County UWEX	920-232-1980
4058	Phillips	Price County UWEX	715-339-2555
4051	Port Washington	Ozaukee County Admin. Center	262-284-8288
4013	Portage	Columbia County Annex Building	608-742-9680
4014	Prairie du Chien	Crawford County UWEX	608-326-0223
4088	Reedsburg	Reedsburg Public Library	608-768-7323
4049	Rhineland	Oneida County UWEX	715-365-2750
4060	Richland	Richland County UWEX Center	608-647-6148
4054	River Falls	UW-River Falls	715-425-3256
4067	Shawano	Shawano County Courthouse	715-526-6136
4068	Sheboygan Falls	Sheboygan UWEX	920-467-5740
4008	Siren	Burnett County Government Center	715-349-2151
4047	Sparta	Monroe County UWEX	608-269-8722
4077	Spooner	Washburn County UWEX	715-635-4444
4056	Stevens Point	Portage County UWEX	715-346-1316
4018	Sturgeon Bay	Door County/City Library	920-746-2261
4019	Superior	Douglas County UWEX	715-395-1363
4072	Viroqua	Vernon County Extension Office	608-637-5276
4004	Washburn	Bayfield County Courthouse	715-373-6104
4080	Waukesha	Waukesha County Admin Center	262-548-7770
4081	Waupaca	Waupaca County Courthouse	715-258-6231
4041	Wausau	Marathon County UWEX	715-261-1231
4082	Wautoma	Waushara County Courthouse	920-787-0416
4045	West Allis	Milwaukee County Extension	414-290-2430
4079	West Bend	Washington County UWEX	262-335-4480
4071	Whitehall	Trempealeau County Courthouse	715-538-2311
4085	Wisconsin Rapids	Wood County Courthouse	715-421-8440

Nonprofit Organization
US POSTAGE PAID
Madison, Wisconsin
Permit No. 658

University of Wisconsin-Extension
Local Government Center
610 Langdon St., Rm. 229
Madison, WI 53703-1195

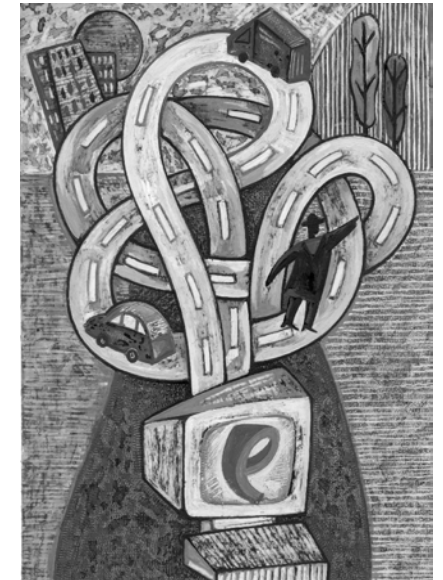
UW Extension

Local Government Center

www.uwex.edu/lgc/

LOCAL TRANSPORTATION ISSUES 2005 - 2006

A WisLine Teleconference Series



Sponsored by:

**UW-Extension Local Government Center
UW-Transportation Information Center
League of Wisconsin Municipalities
Wisconsin Counties Association
Wisconsin Towns Association**

REGISTRATION FORM
Local Transportation Issues
 2005-2006 WisLine Series

WisLine Location (see back panel) _____
 Name _____
 Address _____
 City _____ Zip _____
 Phone () _____
 E-Mail Address _____
 Fax # for Confirmation _____
 Government Unit _____

Check session(s) you wish to attend

(REMEMBER – MAIL IN REGISTRATION ONLY!)

*WisLine Materials
 Session Only
 \$15 \$15

Date	Session	Materials Only
November 17		
December 8		
January 12		
Total Amount		

*WisLine session includes materials.

“Materials Only” requests will be sent to your given address. Cancellations must be received 10 days prior to session date to receive a refund. An audiocassette of a WisLine program may be purchased by calling (608) 262-4342 following the program or using the order form available at http://www.uwex.edu/ics/wisline/tape_order_form.pdf. The cost for a 120 minute tape is \$9.50. The title and date of the program (including the conference code number) must be included with your check.

For information only: (608) 262-9961
 Mail form and fee to: LGC WisLine Registrations
 610 Langdon St., Rm. 229
 NOTE NEW ADDRESS: Madison, WI 53703

[Make check payable to UW-Extension]

The following information is used to enhance the programming efforts of the UW-Extension and is optional.

Sex: Female Male
 Birthdate: Mo. ___ Day ___ Yr. ____
 Heritage: African American Asian/Pacific Islander
 American Indian/Alaskan Native Hispanic/Latino
 White/Other
 Occupational:
 Public Administration (Government) Other

ABOUT THIS SERIES

This series of three programs is designed to keep local managers, directors, highway commissioners, and other public works employees up-to-date on the changing issues faced by local governments. Hear the experts around the state talk about latest technologies and techniques in their fields. This series is coordinated by Alan Probst, UW-Extension Local Government Specialist.

WisLine Teleconference links speakers and participants across the state. Participants register for a convenient location listed on the back panel. At each location, participants can ask questions and share ideas with speakers and cohorts alike. Written materials supplementing the topics will be sent to WisLine sites for participants who register at least 10 days before each program. Late registrants will receive their materials within one week after the program.

Audio-streamed Programs

1. Go to the Local Government Center website at www.uwex.edu/lgc
2. Click on Audio-streamed WisLines. Once you make your selections, you will be prompted through the registration process.

Please note that these programs become available 7 - 10 days after the original WisLine program. You will receive a passcode and username through e-mail 1 - 2 business days after you have submitted payment. Please retain that information for future reference. The cost varies and payment is made on-line or by mail to a different address than for WisLine registration.

Audio-streamed programs allow you to use your computer by Internet access to review various parts of the program, fast forward to others, and pause to take notes. It is much like having a tape or CD player. You can download materials or request a packet be sent to you. Unlike a live WisLine program, however, you will not be able to ask questions and interact with other local officials.

LOCAL TRANSPORTATION ISSUES

2005-06 WisLine Teleconference Series

November 17, 2005 (Thursday), 1:00-2:50 p.m.: LOCAL TRANSPORTATION FUNDING -- Receive updated information on state and federal funding programs for local transportation projects. Learn how the state biennial budget and the federal SAFETEA-LU transportation reauthorization affect funding. Find out how you can most effectively utilize funding programs and ask questions about funding opportunities and issues. *Moderator, Ben Jordan, Transportation Information Center. Presenters, Scott Bush and Steven Coons, Wisconsin Department of Transportation.*

December 8, 2005 (Thursday), 1:00-2:50 p.m.: BIDDING LOCAL ROAD PROJECTS -- Learn about the requirements for bidding and receive sample documents to help you obtain competitive bids. This session will cover the latest asphalt specifications for local roads and review how to prepare estimates of bid quantities. *Moderator, Don Walker, Transportation Information Center. Presenter, Scot Schwandt, Wisconsin Asphalt Pavement Association.*

January 12, 2006 (Thursday), 1:00-2:50 p.m.: DRIVING THE ROAD PERMITTING PROCESS -- A variety of permits are often required for local road projects. This session will review which permits are typically needed for a local road project and discuss how to go about getting them. Examples of local road projects will be used to demonstrate permit requirements, application procedures, and conditions of the permits. *Moderator, Steve Pudloski, Transportation Information Center. Presenter, Roger Laning, Highway Commissioner, Sheboygan County.*

MAIL FORM AND FEE TO



LGC WisLine Registrations
 610 Langdon Street, Room 299
 Madison, WI 53703

UW-Extension provides equal opportunities in employment and programming, including Title IX requirements.